

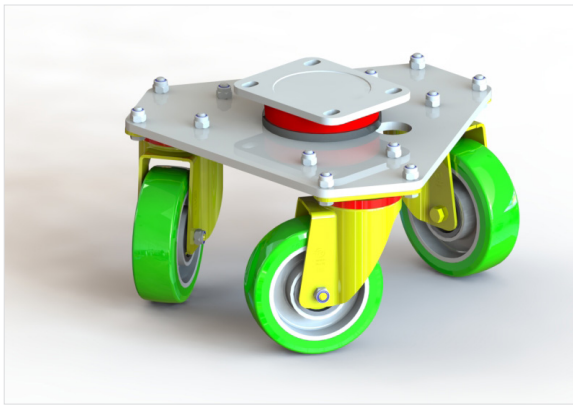
TRIPODS



Originally designed to move theatre stage sets, Tellure Rôta tripods are ideally suited to **transporting heavy loads in a tight space** with minimal effort by operators as well as very little noise and few vibrations. Using "TR" and "TR-Roll" polyurethane wheels ensures a long lifespan together with low starting and rolling resistance.

TRIPODS WITH WHEELS FROM SERIES 62AL

Tyre made of "TR-Roll" polyurethane and centre made of aluminium



Available with NL brackets (standard duty)

| mm | mm | kg | CODE | mm | mm | mm | mm | mm | daN |
|-----|----|-------|--------|-----|---------|--------|----|-----|------------|
| 100 | 40 | 8.47 | 062074 | 170 | 135x110 | 105x80 | 11 | 416 | 600 |
| 125 | 40 | 10.20 | 062140 | 198 | 135x110 | 105x80 | 11 | 466 | 660 |

Available with P brackets (medium-heavy duty)

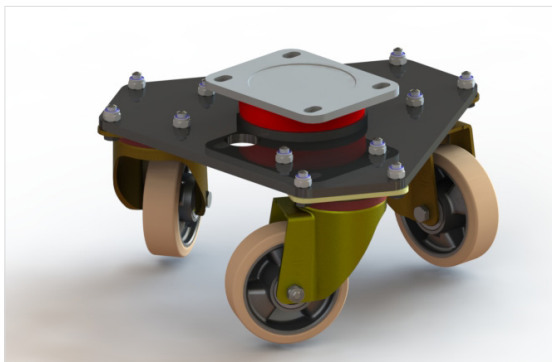
| mm | mm | kg | CODE | mm | mm | mm | mm | mm | daN |
|-----|----|-------|--------|-----|---------|--------|----|-----|-------------|
| 100 | 40 | 9.63 | 062141 | 179 | 135x110 | 105x80 | 11 | 440 | 900 |
| 125 | 40 | 11.20 | 062199 | 202 | 135x110 | 105x80 | 11 | 480 | 1000 |



The loading capacity refers to manual handling (up to 4 km/h), on regular surfaces and in the absence of obstacles.

TRIPODS WITH WHEELS FROM SERIES 65AL

Tyre made of "TR" polyurethane and centre made of aluminium



Available with NL brackets (standard duty)

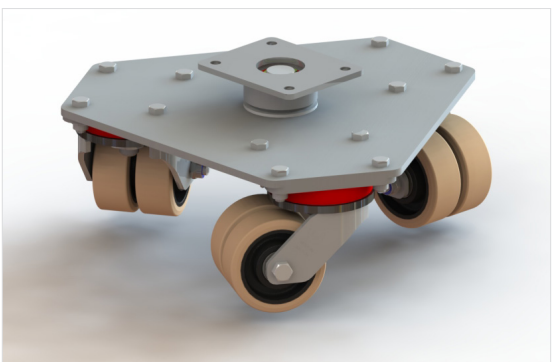
| mm | mm | kg | CODE | mm | mm | mm | mm | mm | daN |
|-----|----|------|--------|-----|---------|--------|----|-----|-----|
| 100 | 30 | 7.92 | 065016 | 170 | 135x110 | 105x80 | 11 | 416 | 600 |
| 125 | 35 | 9.54 | 065017 | 198 | 135x110 | 105x80 | 11 | 466 | 660 |

Available with P brackets (medium-heavy duty)

| mm | mm | kg | CODE | mm | mm | mm | mm | mm | daN |
|-----|----|-------|--------|-----|---------|--------|----|-----|------|
| 100 | 30 | 8.82 | 065123 | 179 | 135x110 | 105x80 | 11 | 440 | 750 |
| 125 | 35 | 10.40 | 065134 | 202 | 135x110 | 105x80 | 11 | 480 | 1000 |

TRIPODS WITH WHEELS FROM SERIES 64

Tyre made of "TR" polyurethane and centre made of cast iron



Available with EE MHD brackets (electrowelded)

| mm | mm | kg | CODE | mm | mm | mm | mm | mm | daN |
|-----|-------|-------|--------|-----|---------|--------|----|-----|------|
| 100 | 38+38 | 23.60 | 064328 | 190 | 135x110 | 105x80 | 11 | 540 | 1000 |



The loading capacity refers to manual handling (up to 4 km/h) on regular surfaces and in the absence of obstacles.