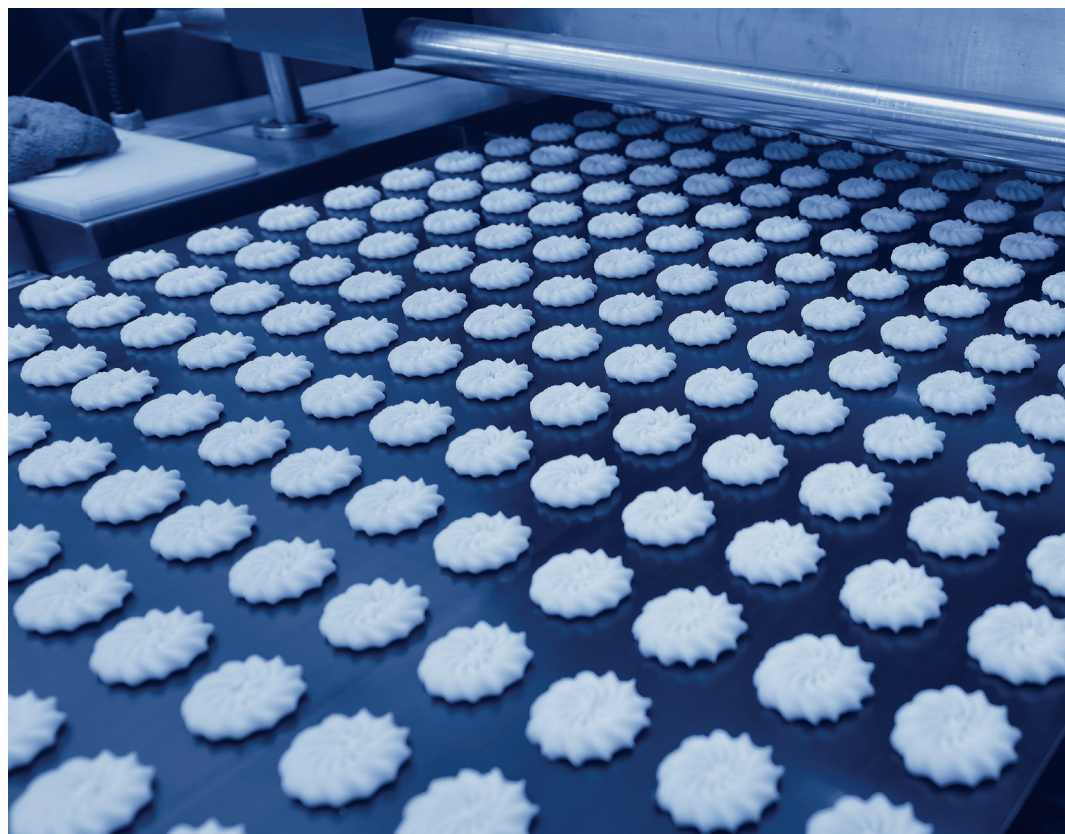


**Your partner
for food safety**

Detectable conveyor and process belts



DET[®]

Detectable conveyor belts



Chiorino DET[®] is a full range of **food grade metal detectable** products.

The exclusive DET[®] TPU belt is **recognized** in very **small particles** by the metal detectors used in food processing and packaging.

Chiorino DET[®] line guarantees a **safest food production** and **prevents products recalls**.

FEATURES

Full compliance with food regulations
Excellent resistance to bacteria proliferation
and cleaning procedures

Highest detectability

Excellent flexibility

Superior resistance to cut, abrasion
and aggressive fats and oils

+ BENEFITS

> **Guaranteed food safety**

> **No food contamination**
Waste reduction
Prevent product recalls

> **Ideal for knife edge**

> **Long service life**

DET[®] Superior detectability +300%

R&D comparison between Chiorino DET[®] line and average competitors shows that the DET[®] line is far more detectable: **+ 300%**.

A very small debris of DET[®] belt is recognized by the metal detector.

The **prompt identification** and removal of the contaminated product assures a **safest food** processing and packaging.

MINIMUM DETECTABLE PART



Based on R&D analysis run on the same metal detector. The Chiorino DET[®] particle recognized by metal detector is three times smaller than competitor's.

DET[®] Protections

Chiorino DET[®] **elastic belts** are successfully used as **components** and **protection parts** in food processing.

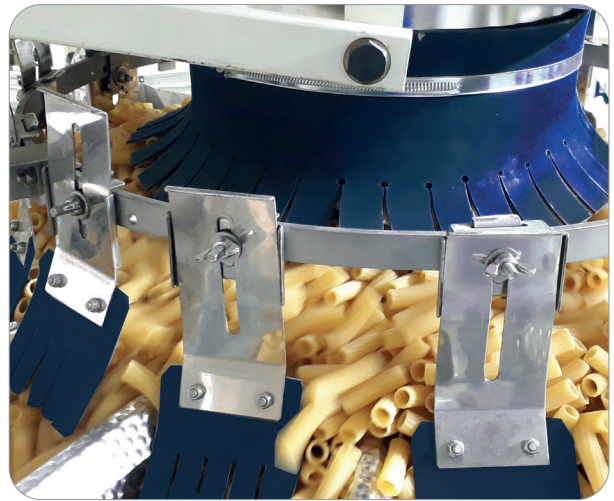
Plastic accessories and components are widely used in food production lines, such as:

- Lateral protections
- Machinery sheets
- Dough feeders coatings
- Wheels
- Skids coverings etc.

They're often **not visible** or **not easily reachable** by the operator, as in the aerial conveyors, in closed structure frames or in case of poor layout accessibility.

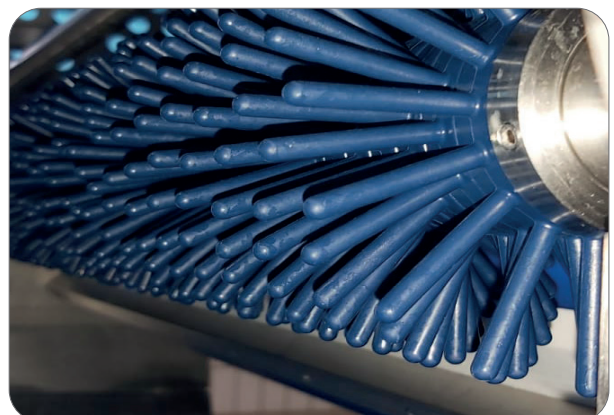
Chiorino DET[®] protections assure

- **Highest detectability**
- **Total food compliance.**




DET[®] Customized components

Chiorino produces DET[®] customized components for particular processing needs, such as AC593 **Wheel blue DET** used for cheese spreading in pizza production.




Profiles / Guides

	Code	Type	Material	Colour	Dimensions b x h mm	Base	Hardness Sh.A	Min. pitch		Min. diameter ⁽¹⁾	
								long. mm	transv. mm	long. mm	transv. mm
	ES751	K6 U P blue DET	TPU	dark blue	6 x 3	flat	85	40	40	35	---
	ES752	K8 U blue DET	TPU	dark blue	8 x 5	grooved	85	40	40	50	---
	ES733	K10 U blue DET	TPU	dark blue	10 x 6	grooved	85	40	40	65	---
	ES867	K13 U P blue DET 55MD	TPU	dark blue	13 x 8	flat	55 ⁽²⁾	45	45	85	80
	ES826	K13 U blue DET	TPU	dark blue	13 x 8	grooved	85	45	45	85	80
	ES813	K17 U blue DET	TPU	dark blue	17 x 11	grooved	85	45	45	125	120
	ES827	KN13 U blue DET	TPU	dark blue	13 x 8	grooved	85	45	45	60	-
	ES814	KN17 U blue DET	TPU	dark blue	17 x 11	grooved	85	45	45	120	-
	ES844	S8 U blue DET	TPU	dark blue	8 x 8	grooved	70	40	40	70	50
	ES843	S12 U blue DET	TPU	dark blue	12 x 12	grooved	70	45	45	100	80
	ES803	T40 U blue DET	TPU	dark blue	10 x 40	flat	85	---	45	---	60
	ES804	T50 U blue DET	TPU	dark blue	10 x 50	flat	85	---	45	---	60
	ES845	T50 U blue DET 55D	TPU	dark blue	20 x 50	flat	55 ⁽²⁾	---	45	---	60

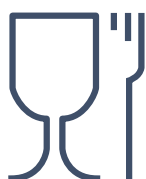
⁽¹⁾ Minimum pulley diameters referred to environment condition of 20 °C

⁽²⁾ Sh.D Hardness

Sidewalls

	Code	Type	Material	Colour	Dimensions			Hardness Sh A	Thickness mm	Min. diameter ¹ mm
					Pitch mm	Width mm	Height mm			
	ES848	C-U 10/20 blue DET	TPU	dark blue	24	22	20	85	1.6	50
	ES849	C-U 10/30 blue DET	TPU	dark blue	24	22	30	85	1.6	70
	ES850	C-U 10/40 blue DET	TPU	dark blue	24	22	40	85	1.6	100
	ES851	C-U 10/50 blue DET	TPU	dark blue	24	22	50	85	1.6	120
	ES852	C-U 20/60 blue DET	TPU	dark blue	50	42	60	85	1.6	150
	ES853	C-U 20/80 blue DET	TPU	dark blue	50	42	80	85	1.6	190

¹ Minimum pulley diameters referred to environment condition of 20 °C



Certified Food Compliance

To protect Consumer's health, Chiorino DET[®] comply with the latest european and international Food Regulations:

REGULATION EC 1935/2004 and amendments

REGULATION EC 2023/2006 and amendments

REGULATION EU 10/2011 and amendments

FDA (Food and Drug Administration)

HALAL (World Halal Authority)



Conveyor belts

Code	Type	Material	Colour	Permanent antistatic	Total thickness mm	Knife edge min. radius ¹ mm	Min. pulley diameter ¹ mm	Pull for 1% elongation N/mm	Temperature resistance °C	
									min.	max.
NA1379	EL4-U20 blue DET	TPU	dark blue		2.0	---	10	4 ²	-30	60
NA1323	EL6-U30 blue DET	TPU	dark blue		3.0	---	20	6 ²	-30	60
NA1558	1M5 U0-U2 blue DET	TPU	dark blue	•	0.8	4	8	5	-30	100
NA1565	2M5 U0-U0 blue DET	TPU	dark blue	•	1.0	4	5	5	-30	100
NA1373	2M5 U0-U2 blue DET	TPU	dark blue	•	1.3	4	8	5	-30	100
NA1427	2M5 U0-U2 PN blue DET	TPU	dark blue	•	1.6	4	8	5	-30	100
NA1564	2M5 U0-U15 ST blue DET	TPU	dark blue	•	3.5	---	50	5	-30	100
NA1474	2MT5 U0-U2 blue DET	TPU	dark blue	•	1.4	4	8	5	-30	100
NA1526	2M12 U0-U15 LT blue DET	TPU	dark blue	•	6.0	---	50	80	-30	100
NA1374	2T12 U0-U2 blue DET	TPU	dark blue	•	1.6	---	25	12	-30	100
NA1406	3M8 U0-U5 blue DET	TPU	dark blue	•	2.3	---	60	8	-30	100

DET[®] belts can be supplied with **sealed edges**.

¹ Minimum radius / pulley diameter dependent on the joint recommended by Chiorino.

² EL series belts: pull for 8% elongation

Positive Drive belts

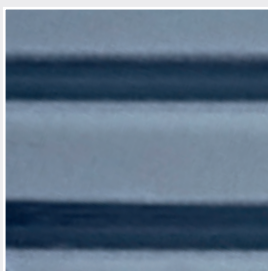
Code	Type	Material	Colour	Total thickness mm	Pitch mm	Tooth section b x h mm	Tooth length mm	Min. diameter ¹ mm	Pull for 1% elong. N/mm	Temperature resistance °C	
										min.	max.
NA1482F_D6	Compact Minidrive 15/20 A blue DET	TPU	dark blue	1.5	20	6 x 4	72	20	10	-30	90
NA1461F_D6	Compact Minidrive 15/20 blue DET	TPU	dark blue	1.5	20	6 x 4	72	25	5	-30	90
NA1460C_D13	Compact Drive 25/40 blue DET	TPU	dark blue	2.5	40	13 x 8	72	80	8	-30	90
NA1561C_D13	Compact Drive 25/40 PN blue DET	TPU	dark blue	2.5	40	13 x 8	72	80	8	-30	90

¹ Minimum pulley diameter is dependent on the joint recommended by Chiorino.

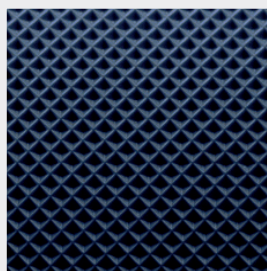
Round belts

Code	Type	Material	Colour	Diameter mm	Surface	Hardness Sh.A	Pull for 8% elongation N	Min. diameter mm	Temperature resistance °C	
									min.	max.
ES790	RU-4 blue DET	TPU	dark blue	4	smooth	85	30	35	-20	60
ES822	RU-5 blue DET	TPU	dark blue	5	smooth	85	50	45	-20	60
ES832	RU-5 R blue DET	TPU	dark blue	5	rough	70	50	45	-20	60
ES791	RU-6 blue DET	TPU	dark blue	6	smooth	85	70	50	-20	60
ES792	RU-8 blue DET	TPU	dark blue	8	smooth	85	130	70	-20	60
ES830	RU-8 R blue DET	TPU	dark blue	8	rough	70	130	70	-20	60

TEXTURES



LT



PN



ST

CHIORINO AFFILIATED COMPANIES

America

CHIORINO AMERICA
Newark, DE
Tel. +1-302-292-1906
info@chiorino.us
www.chiorino.us

Australia

CHIORINO AUSTRALIA
Brisbane
Tel. +61-7-32741900
sales@chiorino.com.au
www.chiorino.com.au

Benelux

CHIORINO BENELUX B.V.
Utrecht - The Netherlands
Tel. +31-30-2413060
chiorino@chiorino.nl
www.chiorino.nl

Byelorussia

CHIORINO-K
Minsk
Tel. +375-17-2804578
general@chiorino.ru
www.chiorino.ru

China

CHIORINO ASIA Ltd.
Hong Kong
Tel. +852-397-10818
info@chiorino.asia
www.chiorino.asia

CHIORINO LIAISON OFFICE

Shanghai
Tel. +86-21-37831019
info@chiorino.cn
www.chiorino.cn

France

CHIORINO SAS
Lagny, Paris
Tel. +33-1-64304075
chiorino.paris@chiorino.fr
www.chiorino.fr

Germany

CHIORINO GmbH
Mainz
Tel. +49-(0)6131-55449-0
info@chiorino.de
www.chiorino.de

Hungary

CHIORINO Kft.
Szigetszentmiklós, Budapest
Tel. +36-24-525930
mail@chiorino.hu
www.chiorino.hu

India

CHIORINO INDIA
Salcete Goa
Tel. +918-322-782454
info@chiorino.in
www.chiorino.in

Italy

CHIORINO PARMA s.r.l. - Parma
Tel. +39-0521-292236
chiorinoparma@chiorino.com

CHIORINO VENETO s.r.l. - Colle Umberto (TV)
Tel. +39-0438-430460
chiorinoveneto@chiorino.com

Poland

CHIORINO Sp. z o.o.
Bydgoszcz
Tel. +48-(0)52-3487708
chiorino@chiorino.com.pl
www.chiorino.com.pl

Portugal

CHIORINO PORTUGAL, LDA
Alfena Valongo, Porto
Tel. +35-122-9684442
geral@chiorino.pt
www.chiorino.pt

Romania

CHIORINO srl
Sannicoara, Jud.Cluj Napoca
Tel. +40-264-432977
chiorino@chiorino.ro
www.chiorino.ro

Slovakia

CHIORINO SLOVAKIA s.r.o.
Nové Zámky
Tel. +421-910-486654
info@chiorino.sk
www.chiorino.sk

South Africa

CHIORINO SOUTH AFRICA (PTY) LTD.
Johannesburg
Tel. +27-11-3971268
sales@chiorino.co.za
www.chiorino.com

Spain

CHIORINO IBERICA S.A.
Rubí, Barcelona
Tel. +34-93-5860480
chiorino@chiorino.es
www.chiorino.es

Switzerland

CHIORINO SCHWEIZ GmbH
Wetzikon
Tel. +41-(0)43-3116001
info@chiorino.ch
www.chiorino.ch

Ukraine

CHIORINO UKRAINE LLC
Poltava region, Shcherbani village
Tel. +38-050806560
office@chiorino.com.ua
chiorino.com.ua

United Kingdom

CHIORINO U.K. Ltd.
Glasshoughton
Tel. +44-1977-691880
sales@chiorino.co.uk
www.chiorino.co.uk

CHIORINO DISTRIBUTORS

Albania
Argentina
Armenia
Austria
Azerbaijan
Bangladesh
Belgium
Bolivia
Bosnia-Herzegovina
Botswana
Brazil
Bulgaria
Cambodia
Canada
Chile
Colombia
Costa Rica
Croatia
Cyprus
Czech Republic
Denmark
Egypt
Estonia
Fiji
Finland
Georgia
Greece
Guatemala
Honduras
Iceland
Indonesia
Iran
Ireland
Israel
Ivory Coast
Jordan
Kazakhstan
Kenya
Kirgizstan
Korea
Laos
Latvia
Lebanon
Lithuania
Macedonia
Malawi
Malaysia
Mexico
Moldova
Morocco
Myanmar
New Caledonia
New Zealand
Nicaragua
Norway
Pakistan
Panama
Papua New Guinea
Paraguay
Peru
Russia
Saudi Arabia
Serbia
Slovenia
South Korea
Sri Lanka
Sweden
Tajikistan
Taiwan
Thailand
Turkey
Turkmenistan
United Arab Emirates
Uzbekistan
Vietnam
Yemen
Zimbabwe

HEADQUARTERS AND PRODUCTION PLANTS

CHIORINO S.p.A.

Via S. Agata, 9
I-13900 Biella, Italy
Tel. +39 015 8489 1
Fax +39 015 849 61 61
chiorino@chiorino.com
www.chiorino.com

UNI EN ISO 9001:2015
UNI EN ISO 14001:2015
UNI EN ISO 45001:2018
OHSAS 18001:2007
EMAS



ENGINEERING ADVICE
ON-SITE INSTALLATION SERVICE
AFTER SALES SUPPORT

