



WHO WE ARE

Brevini Fluid Power is an Italian owned business founded in 2003 by the union of companies from the fluid power sector with over forty years of experience. It is a main hub for made in Italy businesses in the mechatronics sector which includes, besides Brevini Fluid Power in Reggio Emilia, OT Oil Technology in Parma, as well as BPE Electronics in Novellara, VPS Brevini in Bologna and Brevini Fluid Power Yancheng in China.

Brevini Fluid Power positions itself among major producers of hydraulic components in Italy and Europe. The network made up of 14 branches in Italy, France, England, Holland, Germany, Finland, China, India, Singapore, Thailand and USA is combined with the capillary network of distributors to ensure a presence worldwide on seven product lines. The tied partnership with hundreds of clients throughout the world for over ten years clearly shows the commitment of Brevini Fluid Power.

Together to make a difference

Brevini Fluid Power Company has launched an industrial plan based on synergies which constitute the common practice of the entire Brevini Group, a hub that also includes Brevini Power Transmission and Brevini Wind. The Brevini Group offers ten lines of products and has a turnover of Euro 430 million with 2,400 employees and production units in Italy, Germany, China, United States and Brazil.

**HYDRAULIC POWER UNITS
POWER TRANSMISSION**

HYDRAULIC POWER UNITS

Design, manufacturing and customization of Power Packs for any applications fields

Micro Power Pack

Gears pumps
0,25 ÷ 1,26 cm³/ rev
Max working pressure
220 Bar
DC/AC motors
up to 0,8/1,1 Kw



MR

Tank
up to 8 lt
For single and double acting function excellent compactness



MW

Reversible powerpack for double acting function

Power Pack with external motor

Gears pumps
1 ÷ 30 cm³/ rev
AC motors
up to 22 Kw



ST

Conventional bellhousings and couplings + external blocks

Power Pack submerged motor

Gears pumps
½ up to 26 cm³/ giro
Max working pressure
290 Bar
AC motors
up to 4 Kw
Tank
up to 15 lt



CMI

Direct Current Motor Pump



MP

DC Motor 0,35÷0,8 Kw
Gear pumps 0,25÷1,2 cm³/rev



EP

DC Motor 1,6÷2,2 Kw
Gear pumps 1,2÷6 cm³/rev

Mini Power Pack

Gears pumps
0,25 ÷ 9,8 cm³/ rev
Max working pressure
290 Bar
DC/AC motors
up to 3/5,5 Kw
Tank
up to 25 lt



MC-MS

For single and double function + stackable blocks



FP

Flexy Pack 9 usable cavity + stackable blocks



MK

Dock leveller

Power Pack with hydraulic cyrcuit for specific applications



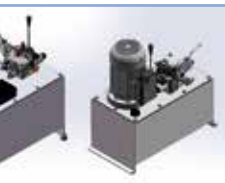
TPS

End head in full material-dedicated cyrcuits



BLS

Home lift



BLC

BLV

Direct Current Motors



BODY SIZE D=80mm

0,35 ÷ 0,8 Kw
12 ÷ 24 Volt



BODY SIZE D=114mm

1,6 ÷ 2,2 Kw
12 ÷ 24 Volt



BODY SIZE D=125mm

3 Kw
24 Volt

POWER TRANSMISSION

Design and manufacturing for hydraulic pump transmissions

Clutches and Belt supports

Flauges
Gr 1-2-3-35-4
SAE
A-B-C
ISO
1-2-3



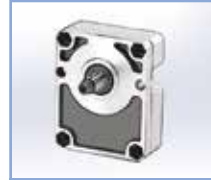
IE - IEG

Electro magnetical clutches
10 ÷ 13 Nm



IM

Mechanical clutches with
parallel shaft



SU

Belt supports parallel and
tapered shaft

Gear Boxes

Speed increaser
Splitter gearbox
Speed reducer



ML - 32

Speed increaser power up
to 10 Kw



ML 52 - ML 52B

Speed increaser power up
to 30 Kw



B 580

Speed increaser power up
to 30 Kw



B 585

Speed increaser power up
to 40 Kw



B 600

Speed increaser power up
to 50 Kw



B 502

Splitter gearbox power up
to 50 Kw



B 582

Splitter gearbox power up
to 50 Kw



B 602

Splitter gearbox power up
to 100 Kw



RD 33

Speed reducer power up
to 4,5 Kw



RD 42

Speed reducer power up
to 5 Kw



RD 52

Speed reducer power up
to 15 Kw

Bell housing and coupling for AC motors



HL

Bellhousings type 5 up to
size 225



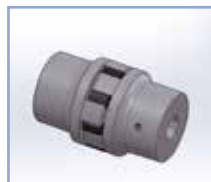
HE

Aluminium couplings up
to 30 Kw



GB

Curved tooth gear
couplings up to 55 Kw



HF

Cast iron couplings up to
132 Kw

Splined couplings



BF

Din and SAE profiles

Innovation for growth

The innovation in Brevini Fluid Power comes from the precise decisions of shareholders. Investments in Research & Development total 6-7% of the annual turnover, as well as investments in training of human resources through the TMS Technical and Management School, including the Werther Campaldi Project.

The field of applications of the components (pumps, motors, power packs, valves, electronic control systems, special manifold and subplates) and systems manufactured by Brevini Fluid Power includes:



INDUSTRIALS



TRANSPORTATION
LIFTING
LOGISTICS



CONSTRUCTIONS
EARTH-MOVING



MARINE
HARBOUR



MINES, QUARRIES
AND SITES



AGRICULTURE



ECOLOGY



PUBLIC WORKS

Brevini Fluid Power employs 730 people worldwide and has a turnover from businesses abroad that will reach Euro 150 million in a few years, totalling 70%.



Brevini Fluid Power S.p.A

Via Moscova, 6 - 42124 Reggio Emilia - Italy

Tel +39 0522 270711 Fax +39 0522 270660

info@brevinifluidpower.com

www.brevinifluidpower.com

